

brewmaxx

Process Control Systems. MES inside.
The Plant IT™ industry solution for breweries.

Works with

EcoEtruxure™

brewmaxx LMS

The high-performance Line Management System for fault data acquisition and analysis

Our Line Management System (LMS) for data acquisition and analysis at lines, plants and machines is available as a compact solution with minimum investment costs.

brewmaxx LMS is used to precisely record, allocate and analyse fault data. Furthermore, it can be applied to create electronic shift and order records – an important step towards paperless production. Operation takes place via a web browser at available operating stations or using mobile end devices.

This compact solution provides the basis for optimizing filling and packaging plants or auxiliary plants and can be implemented easily and quickly.

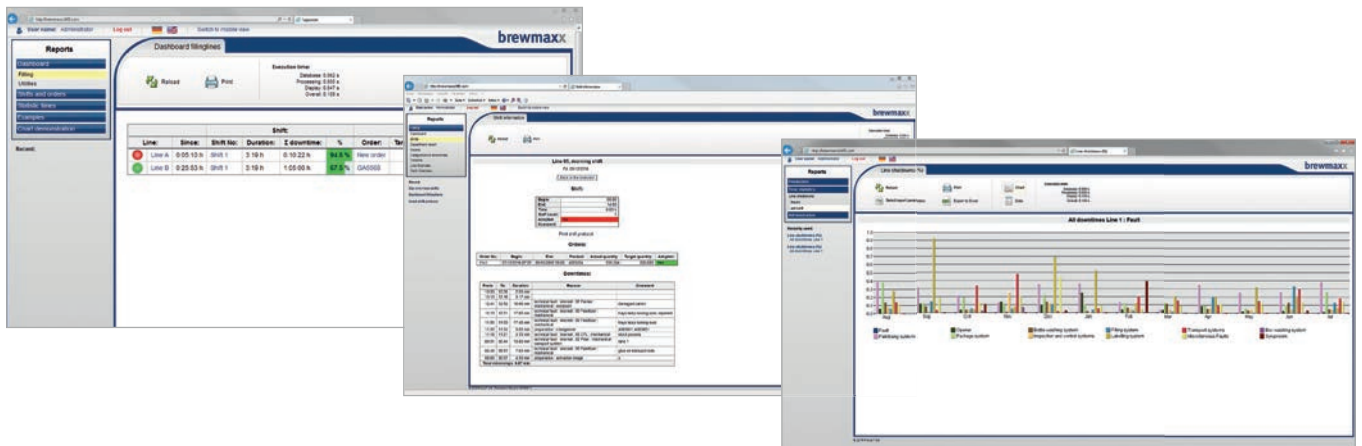
proleit.com

ProLeiT

by **Schneider** Electric

Advantages of brewmaxx LMS:

- Dashboard for current performance data – Overview of all units and plants as well as their temporal status history
- Electronic shift and order records – Paperless production
- Analysis of the causes of malfunctioning – Basis for optimising plants
- Scalable for add-ons – Can be applied to 1-n lines and units
- Web-based application – Access to data via web browser or mobile devices
- Recording of malfunction periods via current signal/power consumption –
 - Access to the available controller and additional head station not required
 - Commissioning possible during full-scale production



proleit.com

ProLeiT.
by Schneider Electric

ProLeiT GmbH
Einsteinstr. 8 | 91074 Herzogenaurach | Germany
Tel: +49 9132 777 0 | Fax: +49 9132 777 150 | info@proleit.com

© 2021 ProLeiT

Plant iT and brewmaxx are registered trademarks of ProLeiT. Schneider Electric, Microsoft, Qlik, Rockwell Automation, SAP, Siemens, Windows and all other brand names used and not mentioned here are registered trademarks of the respective companies. The information in this document contains general descriptions and performance features that may not always apply to the concrete application case in the specified form or may change to subsequent further development of the different system components. Some of the graphics and images used in this document are just examples and may differ from the delivery status. ProLeiT and all subsidiaries are responsible for system functions and services according to the respective express contractual scope of supply and services only.